



## SMARTMATCH

PERFECT MATTRESS SEARCH SYSTEM

Unconscious and trial-and-error mattress choices affect sleep quality and human well-being. Mattresses that do not fit the body shape force the spine, waist and shoulder over time. This increases the complaints of tired waking up in the morning and inefficiency during the day. This also causes to wake up frequently at nights and therefor to be sleepless.

In order to prevent all these negativities, Yataş has developed **Smart Match Perfect Mattress Search Sytem**, which is prepared with algorithms that are the result of detailed researches carried out by Yataş Sleeping Laboratories. The Smart Match application allows you to easily find the right Yataş mattress for yourself by evaluating your specific information and sleeping needs.

Visit [www.yatasbedding.com](http://www.yatasbedding.com) and discover the best mattress options for you with **Smart Match**, meet healthy sleep.

[yatasbedding.com](http://www.yatasbedding.com) [YatasBedding](#) [YatasBedding](#)



## S-LINE COMFORT

**Perfect Harmony**  
**Excellent Support**

Each one of them having been produced in different sizes, S-Line springs have been designed in order to minimize the pressure and provide the correct support to all body types thanks to complete analysis of the human body. The lower section of the S-Line springs is made of rigid springs. Each pocket consists of rigid springs. This section supports both the springs in the upper section and thus the body in the most accurate way. High pressure that is being applied particularly on head, neck and back increases stress and decreases sleep quality. The springs in the upper section of the S-Line reduce involuntary tosses and turns and offer a good quality sleep while providing maximum comfort while minimizing pressure.

## S-LINE COMFORT

Personalized comfort with the combination of advanced memory foam or HR Gel technology and new S-Line springs..

[yataş®bedding](#)

[yataş®bedding](#)

## S-LINE COMFORT



### High quality, open cell technology Yataş memory foam advantages:

- It increases the pressure damping area by wrapping the body.
- It is sensitive to body temperature and weight.
- It reduces unwanted rotational movements during sleep.
- It helps to maintain the natural curvature of the spine.
- Open cell structured memory foams can pass more air than closed cell foams.

The viscoelastic featuring open cell technology used in Yataş mattresses are Oeko-Tex® Standard 100 class II certified. This certification approves that the viscoelastic foams manufactured by Yataş do not contain cancerous and toxic chemicals.

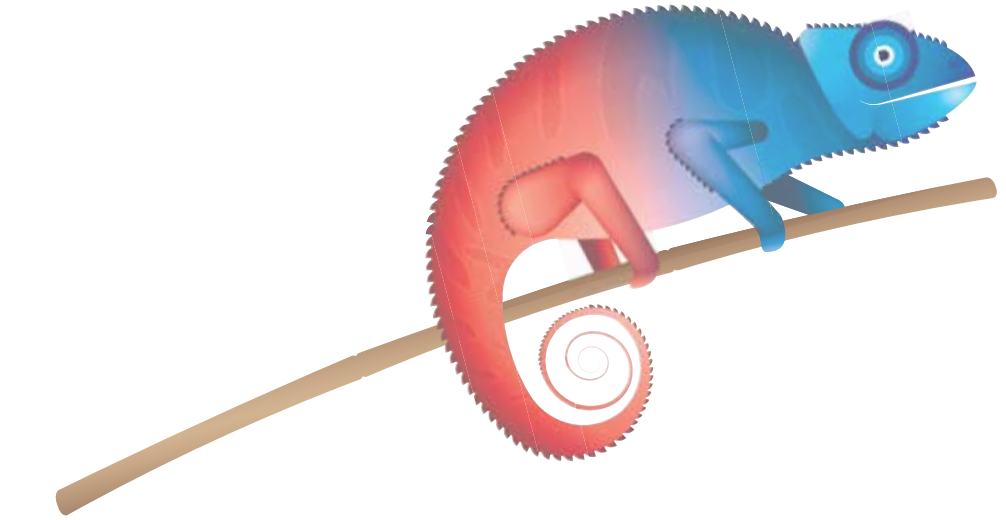
## S-LINE MF COMFORT

The S-Line MF mattress maximizes comfort with its exclusively designed spring system that adapts to all types of bodies. Being produced in different sizes and double-layered, S-Line springs minimize the pressure of the mattress applied to the body, and embrace and support the body fully thanks to the open-cell memory foam which is being produced at Yataş's own facilities. The Adaptive™ micro-climate technology in its fabric provides the ideal sleeping temperature for different body types.



## S-LINE HRG COMFORT

The S-Line HRG mattress maximizes comfort with its exclusively designed spring system that adapts to all types of bodies. Being produced in different sizes and double-layered, S-Line springs minimize the pressure of the mattress applied to the body, while helping the body relax and rest by supporting all convex areas of the body thanks to HRGel, a special material with high density and elasticity.



### 67% Better Humidity Control with Adaptive™

In the exact same environment, women may feel cold while men may feel hot. Intelligent material & design award-winning Adaptive™ technology mimics the actions of a smart air conditioner by distributing the humidity 67% better and evaporating it at a 25% faster rate. In other words, the Adaptive™ technology offers personalized sleeping temperature.



Adaptive™ Technology has won Interzum Material & Design Award.